



14690 Mapleton Ln

Text 14690 to 231-225-4140 for more information



Old Mission Peninsula Estate

Custom designed and built Old Mission Peninsula home

5 acre estate sized parcel

Breathtaking East Bay sunrise views



231.668.6303

LiveOMP.com

homes@traversenorth.com

Ken Weaver: 231.357.0821

Amy Green: 231.633.0808

Features

Property Features:

- Private 5 acre lot
- Exceptional East Bay Sunrise views
- Circular driveway
- Cherry orchard
- In ground irrigation
- Close to Old Mission dining, shopping, beaches and vineyards

Garage Features:

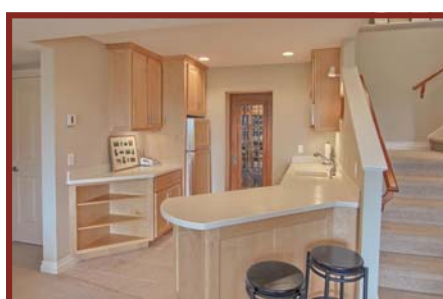
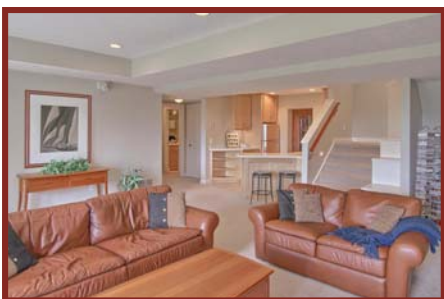
- 4 car heated garage with large bonus room
- Drive through stall
- Epoxy flooring
- Hot and cold running water
- Separate basement entrance

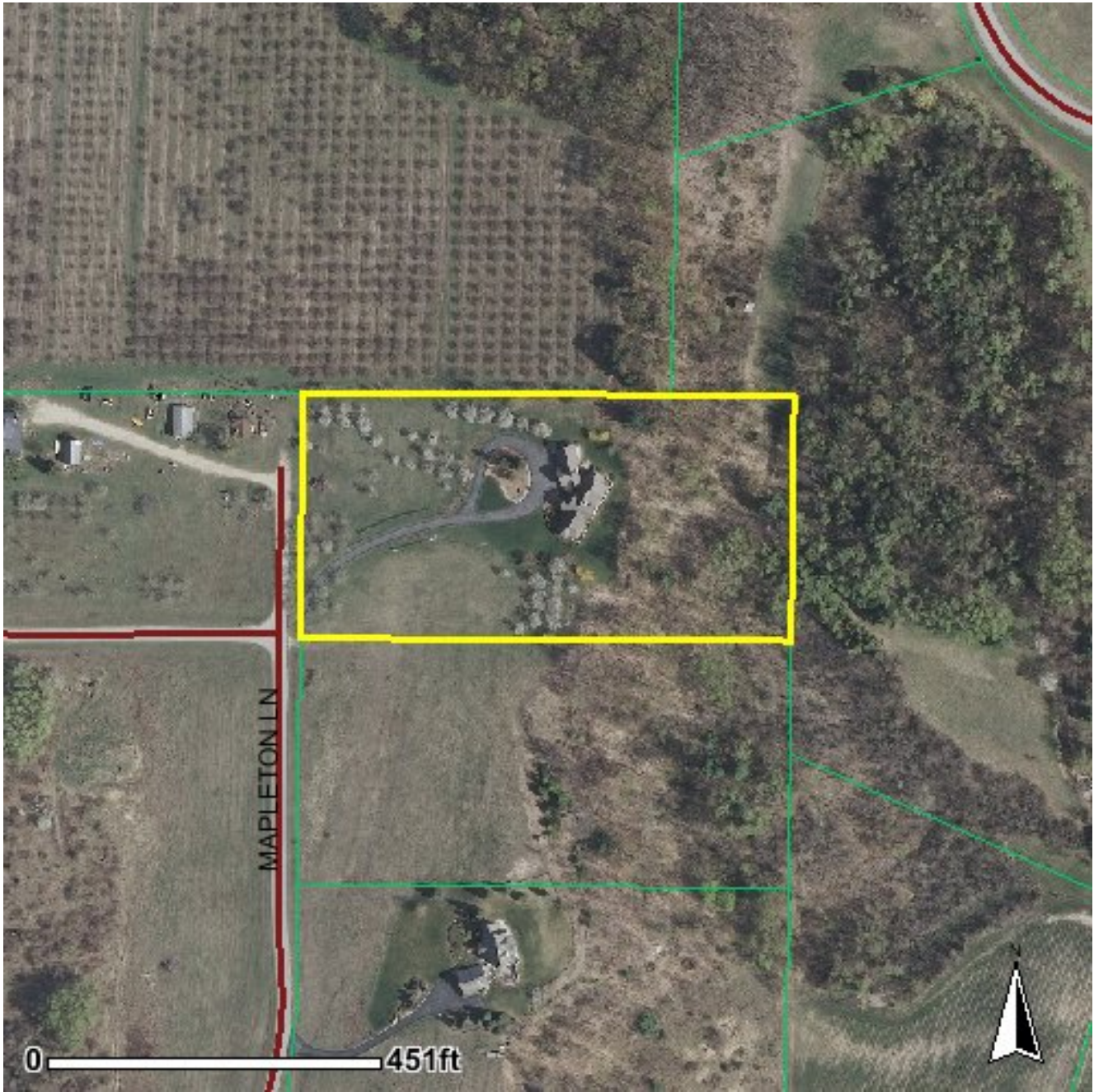


Features

Home Features:

- Custom designed by architect, Bob Yvon
- Built by Mission Bay Construction
- Semco high-end windows
- Geothermal heating/cooling
- Home is prepped for elevator
- Custom ample kitchen with Corian counter, under cabinet lighting and oversized pantry
- Central vacuum including automatic kitchen floor vac
- Maple tongue and groove ceiling in sun room
- E-tech dehumidifier for bath
- Heated bathroom floors
- Cherry flooring and tiled floors throughout
- Filtered water system
- Temperature controlled wine cellar with leaded glass door
- Smart home to control lights, heat, and security
- Oversized solid core doors
- Lower level kitchenette





Disclaimer

All information provided has been furnished by the seller and/or other sources. This information is accurate to the best of our knowledge. However, we encourage prospective buyers to verify any and all information prior to closing.

